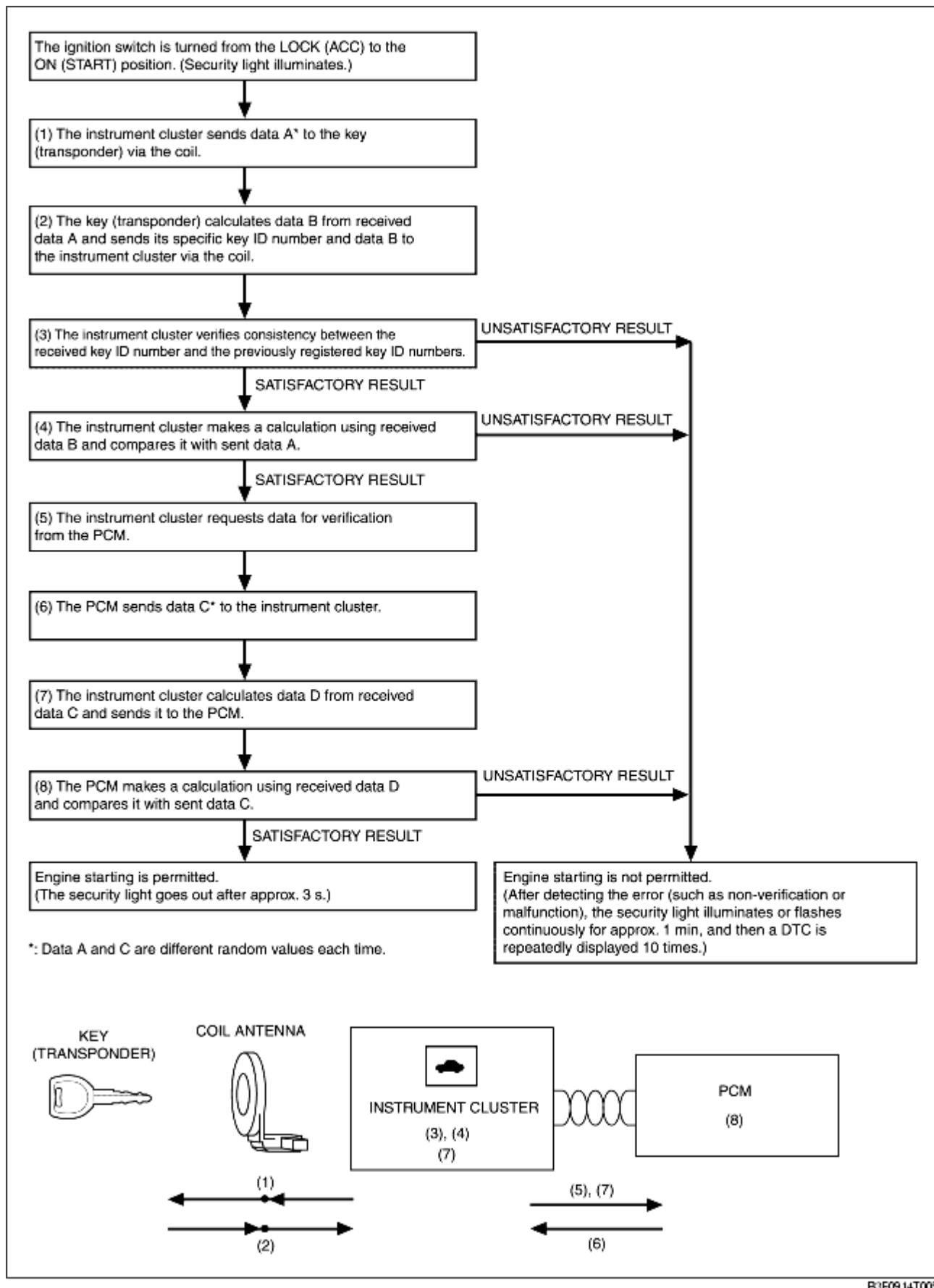


IMMOBILIZER SYSTEM CONSTRUCTION/OPERATION

B3E091401077T04

- When a key is inserted into the key cylinder, the key ID number of the key and the key ID number registered in the PCM are compared. If the comparison is successful, permission is given to start the engine. For PCM control, see Section 01, CONTROL SYSTEM.
- Keys contain a unique ID number that is previously registered in the instrument cluster. Due to this, if immobilizer system component parts are replaced (such as key addition/clearing and instrument cluster replacement), it is necessary to reset the system.

Immobilizer System Release Operation



Immobilizer System Setting

- The immobilizer system can be set so that only the WDS or equivalent must be used to perform system

procedures. When using the WDS or equivalent, first security access must be requested. Obtain security access permission according the WDS or equivalent screen and then perform system procedures.

WDS or equivalent setting items	Contents
Programming an additional ignition key	Allows key ID number registration.
Ignition key ID number clearing	Clearing and registration of key ID numbers.
Parameter reset	Initialization of either of the following: <ul style="list-style-type: none"> • PCM • Instrument cluster
Customer spare key programming enable	"Method for adding other keys using two keys that can start the engine" is enabled. <p>Note</p> <ul style="list-style-type: none"> • This is the default setting on new vehicles.
Customer spare key programming disable	"Method for adding other keys using two keys that can start the engine" is disabled. <p>Note</p> <ul style="list-style-type: none"> • When only the WDS or equivalent must be used to register key ID numbers, making a forged key by using two keys that can start the engine is prevented. This function is for use by rental car or other companies with vehicle fleets.

• When immobilizer system component parts (key, Instrument cluster, PCM, and coil antenna) are replaced, the system must be reset as described below. For setting method details, see Mazda3 Workshop Manual.

Component part	Setting
Key addition	Key ID number of added key must be registered. Key ID number registration is performed according to the following methods: <ul style="list-style-type: none"> • Method for registering other keys using two keys that can start the engine • Method using the WDS or equivalent
Key clearing	The registered key ID number can only be cleared using the WDS or equivalent. When clearing a key ID number using the WDS or equivalent, all key ID numbers are cleared.
PCM replacement	<ul style="list-style-type: none"> • Parameter reset must be performed. • The key ID numbers for all keys that were being used must be registered in the WDS or equivalent. Two or more keys must be registered.
Instrument cluster replacement	<ul style="list-style-type: none"> • Parameter reset must be performed. • The key ID numbers for all keys that were being used must be registered in the WDS or equivalent. Two or more keys must be registered.
Coil antenna replacement	Resetting of the immobilizer system does not need to be performed.